

S.W. 1/4 SEC. 17, T.6N., R.2E., S.L.B. & M.

IN WEBER COUNTY

SCALE 1" = 200'

TAXING UNIT: 318

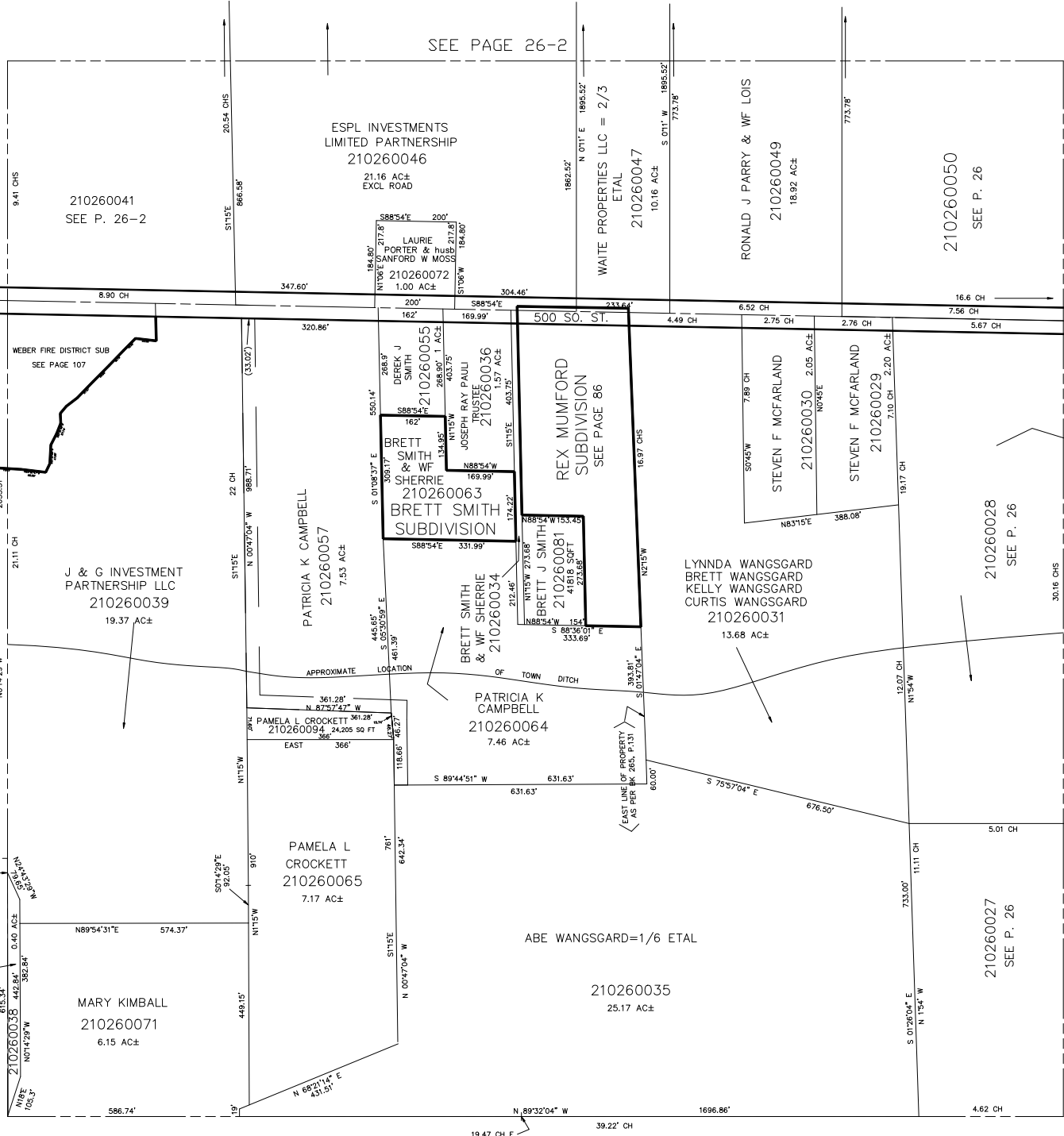
SEE PAGE 26-2

SEE BOOK 24, P. 19

SEE BOOK 24, P. 18

WEBER COUNTY

SEE PAGE 34



210260041  
SEE P. 26-2

ESPL INVESTMENTS  
LIMITED PARTNERSHIP  
210260046  
21.16 AC±  
EXCL ROAD

WAITE PROPERTIES LLC = 2/3  
ETAL  
210260047  
10.16 AC±

RONALD J PARRY & WF LOIS  
210260049  
18.92 AC±

210260050  
SEE P. 26

WEBER FIRE DISTRICT SUB  
SEE PAGE 107

J & G INVESTMENT  
PARTNERSHIP LLC  
210260039  
19.37 AC±

PATRICIA K CAMPBELL  
210260057  
7.53 AC±

BRETT SMITH  
& WF  
210260063  
BRETT SMITH  
SUBDIVISION

REX MUMFORD  
SUBDIVISION  
SEE PAGE 86

STEVEN F MCFARLAND  
210260030  
2.05 AC±

STEVEN F MCFARLAND  
210260029  
2.20 AC±

210260028  
SEE P. 26

LYNNDA WANGSGARD  
BRETT WANGSGARD  
KELLY WANGSGARD  
CURTIS WANGSGARD  
210260031  
13.68 AC±

PATRICIA K CAMPBELL  
210260064  
7.46 AC±

PAMELA L CROCKETT  
210260065  
7.17 AC±

MARY KIMBALL  
210260071  
6.15 AC±

ABE WANGSGARD=1/6 ETAL  
210260035  
25.17 AC±

210260027  
SEE P. 26